



Shark-M300

www.lcsonar.com



Cost-effective,affordable
High accuracy ,high resolution
Portability
Low power consumption

M300 is a high accuracy and high resolution multibeam systems, the use of amplitude and phase detection technology, to achieve a high coverage of 130 degrees, number of beams up to 512. The new sonar interface technology improves the time synchronization accuracy of all the auxiliary sensors, realizes the synchronization of the millisecond level, and improves the accuracy of the system.

The Sonar consists of compact projector, receiver modules and inboard Sonar Interface Module Third party auxiliary sensors are connected to the Sonar Interface Module.The sonar data is tagged with GPS time.

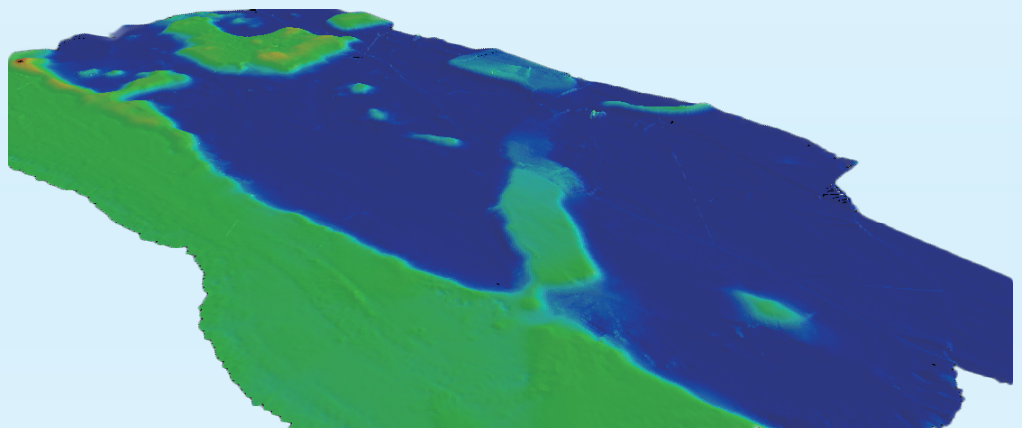
AC power supply, battery power supply can be used for ultralow power consumption design. The mechanical structure is compact and portable, easy to carry, reliable and durable.

Features

- Focused 1.5° * 1.5° beam widths
- Wide swath sector 10° to 130°
- Automated Track and Control
- Easy installation and opetation
- Low volume ,weight and power
- OTech® customizable software
- Optional other sensors

Applications

- Hydrographic Surveys
- Dredging surveys
- Port mapping
- River surveys
- Environment Rearsh
- Pipeline Route
- Defense & Security



Beijing

Tel : (010)60789808

Email: oceansuv@163.com

Shanghai

Tel : (021)50810062

Email : info@rokem.com

Guangzhou

Tel : 18998389785

Email : oceansuv@163.com

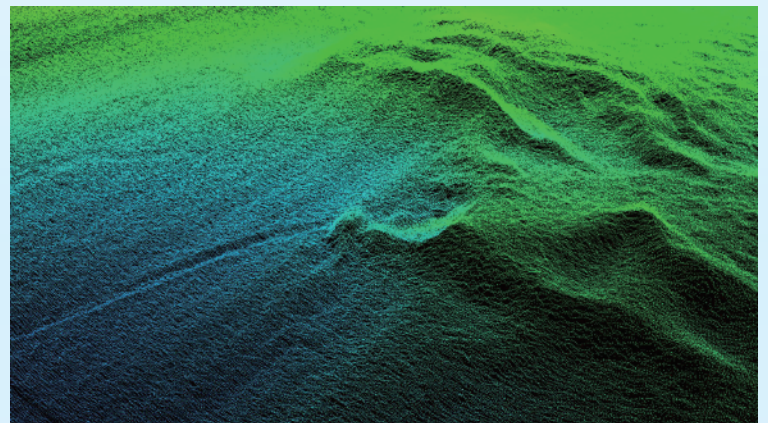


Shark-M300

www.lcsonar.com

Systems Specification	
Frequency	300kHz
Beam Width	1.5° * 1.5°
Pulse Length	25us-500us ,CW
Ping Rate	25Hz
Range Resolution	2cm
Swath Sector	130°
Number of beams	64、128、256 or 512
Max Range	300m
Temperature	-5°C - 45°C/-30°C - 55°C
Power	200-240VAC 50Hz / 24VDC
Consumption	30W

Mechanical	
Projector Dim	210mm*110mm*125mm (L*W*D)
Projector Mass	4.0kg
Receiver Dim	210mm*110mm*125mm (L*W*D)
Receiver Mass	4.3kg
Integration Dim	360mm*242mm*222mm (L*W*H)
Integration Mass	13.5kg
Module Dim	375mm*345mm*135mm (L*W*H)
Module Mass	9.5kg
Cable	25m



Beijing : Rm. 1202, No. 9 ,Huilongguan, Changping Area
Shanghai : Rm. 804, No. 438, Pudian Road, Pudong New Area
Guangzhou : Rm.101,No555,the North of Panyu Area,

Phone : (010)60789808
Phone : (021)50810062
Tel : 18998389785